

I

Sylvia - So glad you are
restoring the playhouse - 9/30/96
Picture of DD in garden - circa 1976.

Original
4 pieces

There were little Book shelves
under each of the side
windows.

When we got the wicker
sofa we might have
put the book shelf up on
the wall in that space in
the picture.

Above that could have
been the picture of 3 ladies
old fashioned dress -

I still have the following

1. Picture of Ladies
2. Cover for ^{the} small white
table is orange trim which
stood at an angle across
the tree.
3. Cookie jar stood on
this - the top only remains.
4. The Books, but in very
old condition.

Out doors, backed up to the
bushes on west - a dark
green glider is a green top.
(which disintegrated)

Playhouse 3/10/1928

Children's Pictures to show
chairs. There were three.
Other chairs were from the
big house.

Children - 1904

Patricia Skinner

Guy Sells

Paula Oakes

Henry Oakes Skinner

Bottom Photo

J.D.O. -

Jean Fredericks on right - back view

Lady - Mrs home Dowell, J.D.O.'s Aunt

Charlotteville, Va



Bloomfield, N.M.

G.W. DeLoach
1928

Highway 1

Photo
copy of
S.W. has picture
↓



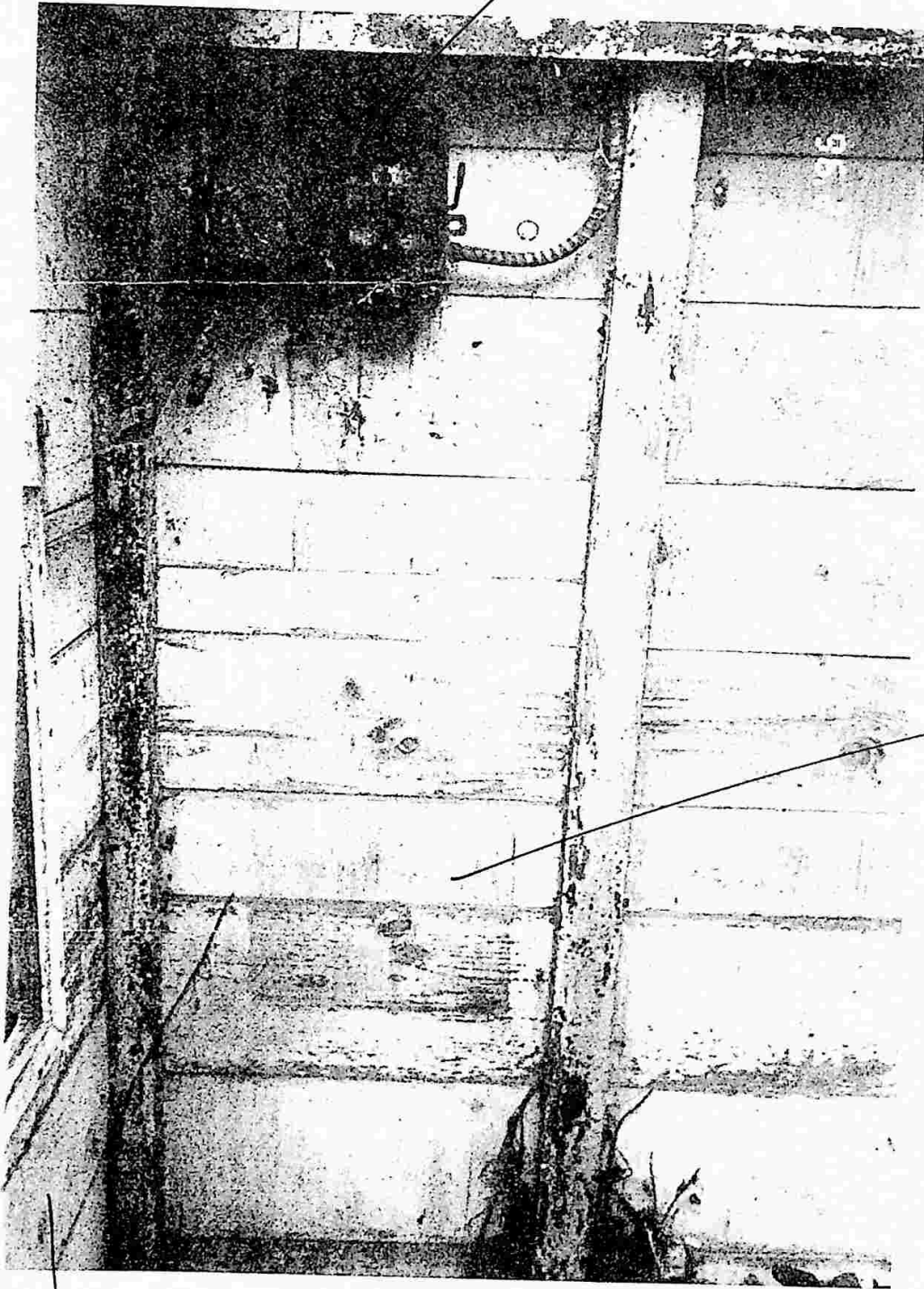
Oakeside
Playhouse. 1928.

Use Fox

Jan:

It was so good
talking to you about
the playhouse. If
you can answer my
question let me know.
I'm also enclosing my
notes for you to make
additions or corrections.

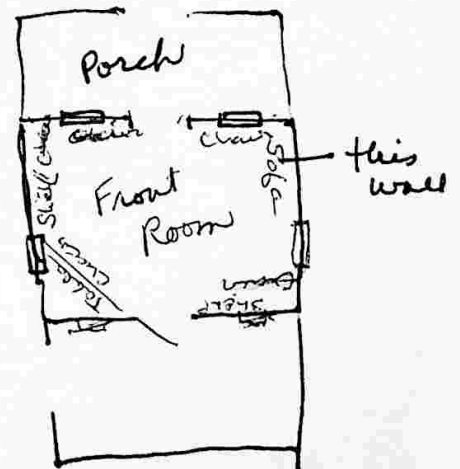
West wall Jaska
 Sylvia



Mark on wall of
Book shelf
Ladies picture above

Do you remember
what was on the
wall to leave
this mark?

South
wall.



Prepared by S. Woolworth.

928

Playhouse history from Jean Oakes 9/6/96

People who helped with the house.

Tom Oakes - finished the house by the time
the 12:00 noon whistle blew at the mill
from the mill - Harry Islandberger - Hazelwood Rd.

Steven Skyles + Jean W. Oakes

Bell Mc Loughland - Walnut St
made the railing for the porch

Frank Keefer was the electrician -

Wired it because there was only a line from
the carriage house + it wasn't safe. -

The sink was connected to the hydrant near the
gate with a hose (rubber) + it had faucets.

Green cabinet, left of sink.

There was an electric stove, Lionel stove, yellow oven.
It was in the kitchen ~~with~~ near tree. -

Lumber was from Murray's Lumber yard

Req in front room 4x6 from Sears Roebuck Catalog
Orange + green sized color beige

Curtains ~~had~~ white with green polkadots

Front room had shelves with Uncle Welfey books

There was a sofa (straw) in front room +
father sat in it + it was never the same. - (Mother +
Father came to visit)

There were green chairs with orange dots.

Green table with orange trim.

House - 12 x 14 ft. at approx.
20' 3" high
Dormer on roof

Reasons out of proportion
but the plan is not correct

